



# 2021 BOND ELECTION

BASTROP INDEPENDENT SCHOOL DISTRICT

## Bastrop ISD Bond Presentation

# DISTRICT PROFILE

15

SCHOOLS



PLUS PAC & MEMORIAL STADIUM

1,708,990

SQUARE FOOTAGE  
OF ALL FACILITIES

STUDENT ENROLLMENT

11,514

**B** ACADEMICS

**A** COLLEGE, CAREER &  
MILITARY READINESS

**SUPERIOR**  
FIRST FINANCIAL  
RATING 17 YEARS



736 TEACHERS with AVERAGE 10 YEARS EXPERIENCE

**1 in 4** EDUCATORS WITH  
ADVANCED DEGREES  
BEYOND A BACHELOR'S

LARGEST COUNTY EMPLOYER WITH 1,325 EMPLOYEES

GRADUATION RATE  
HIGHER THAN REGION  
& STATE AVERAGE

96%

# CITIZENS ADVISORY TASK FORCE

---

- ★ Parents and grandparents
- ★ Teachers
- ★ Bastrop ISD alumni
- ★ Entrepreneurs and business leaders
- ★ Faith-based and civic leaders
- ★ Chamber of Commerce members
- ★ PTA representatives
- ★ Retirees
- ★ Residents from throughout the BISD boundaries

**59**  
**COMMUNITY  
MEMBERS**

# SCOPE OF WORK for the TASK FORCE

---

- ★ To consider and analyze data related to possible bond election
- ★ To gain knowledge of public school finance and district financial data
- ★ To review district facilities, curriculum & instruction, technology, student enrichment, and safety & security needs
- ★ To collaborate with others to formulate bond package recommendations



**6** MONTHS **RESEARCH** **DELIBERATION** **INPUT**

# FRAMEWORK for PRIORITIZING NEEDS

---

## 4 Goals from the Superintendent & Board of Trustees



## 6 Guiding Principles

1. Enhance safety and security
2. Manage growth & minimize use of portables for classrooms
3. Configure campuses to enhance teaching & learning
4. Limit school size
5. Preserve straight line feeder patterns at the secondary level
6. Have no tax rate impact

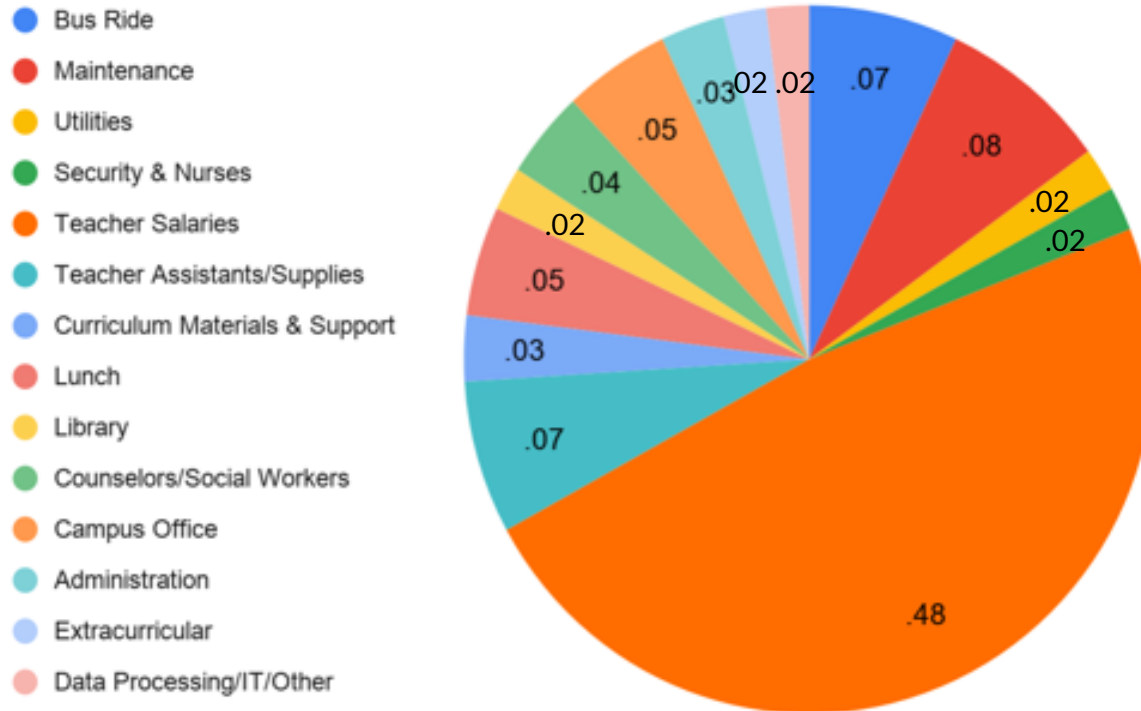


## School Finance

- Operational expenses
- Savings to taxpayers
- Total tax rate history
- Comparison to our peers

# SCHOOL FINANCE 101: Operational Expenses

★ BISD spends 84% of its budget on instruction and related student services.



# SCHOOL FINANCE 101: Savings to Taxpayers

---

- ★ BISD has actively deployed multiple debt management practices to lower the borrowing costs of taxpayers resulting in **more than \$40 million in savings** since 2009.

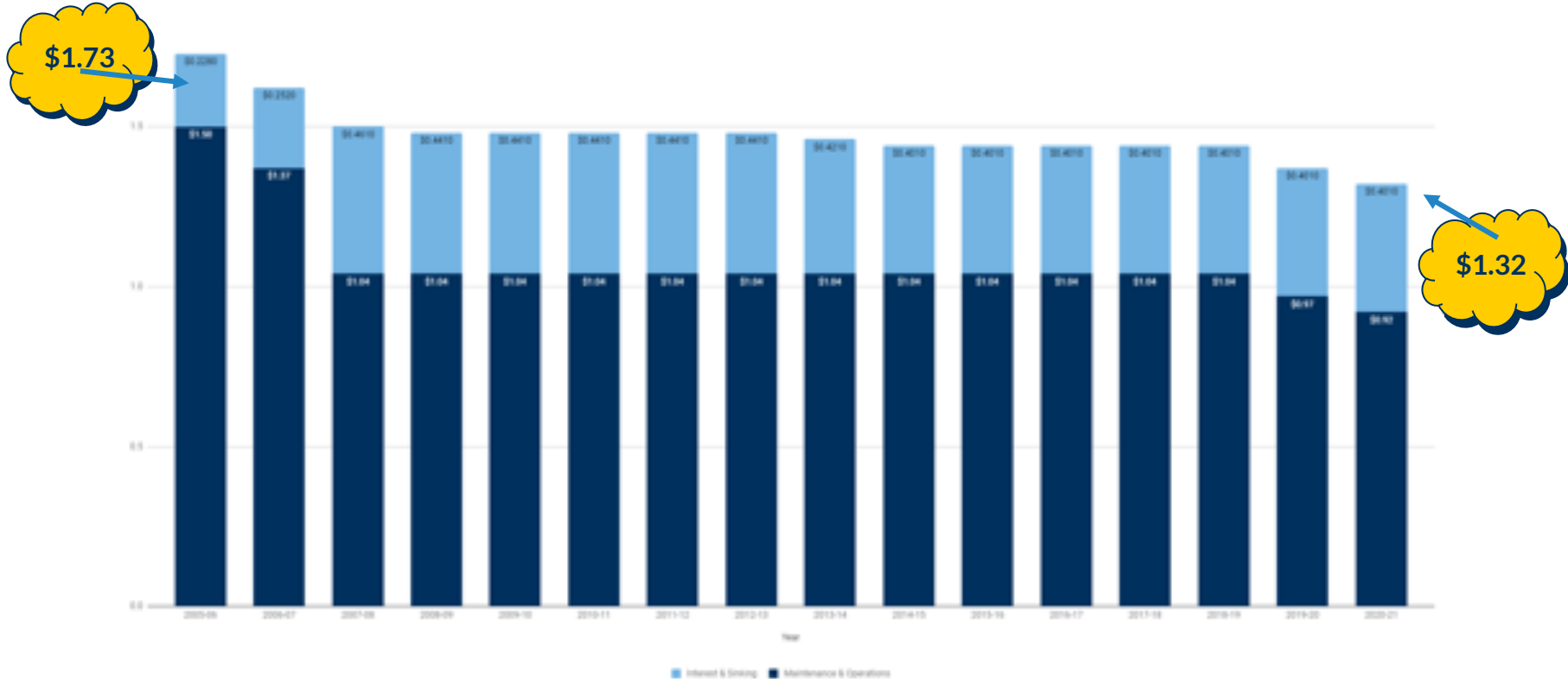
**\$33** REFUNDING  
MILLION

**\$7.8** million  
PREPAYMENTS



# SCHOOL FINANCE 101: Tax Rate History

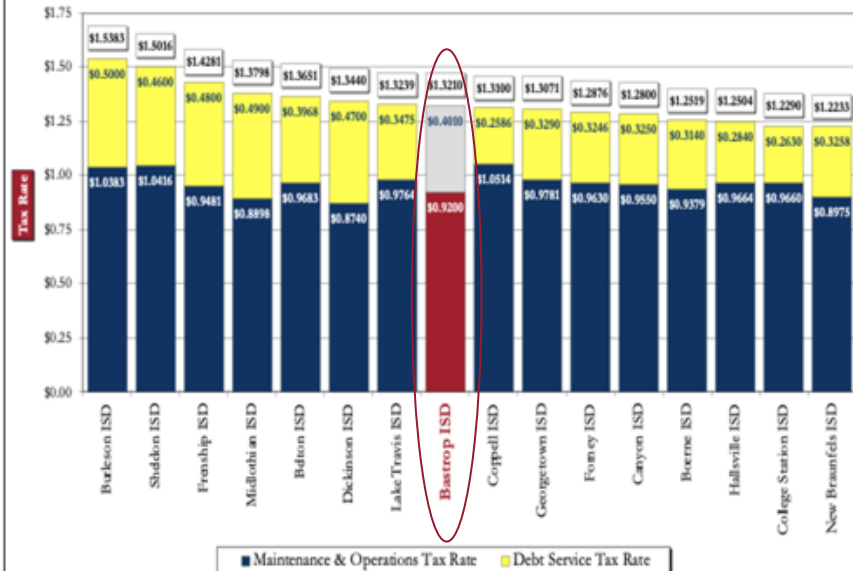
★ BISD has lowered the tax rate multiple times, including in 2020.



# WHERE BISD RANKS: Total Tax Rate

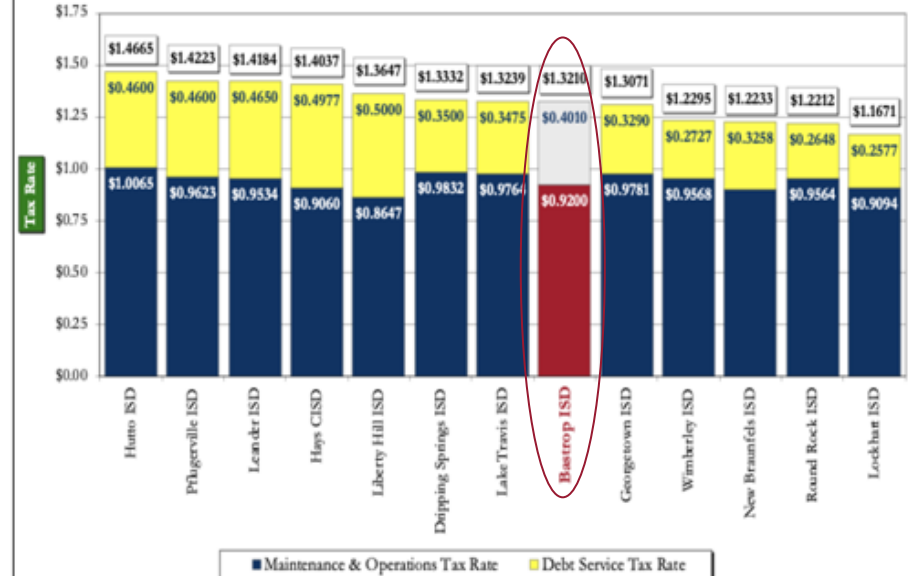
## FAST GROWTH PEERS

Ranked By Total Tax Rate – Year 2020/21



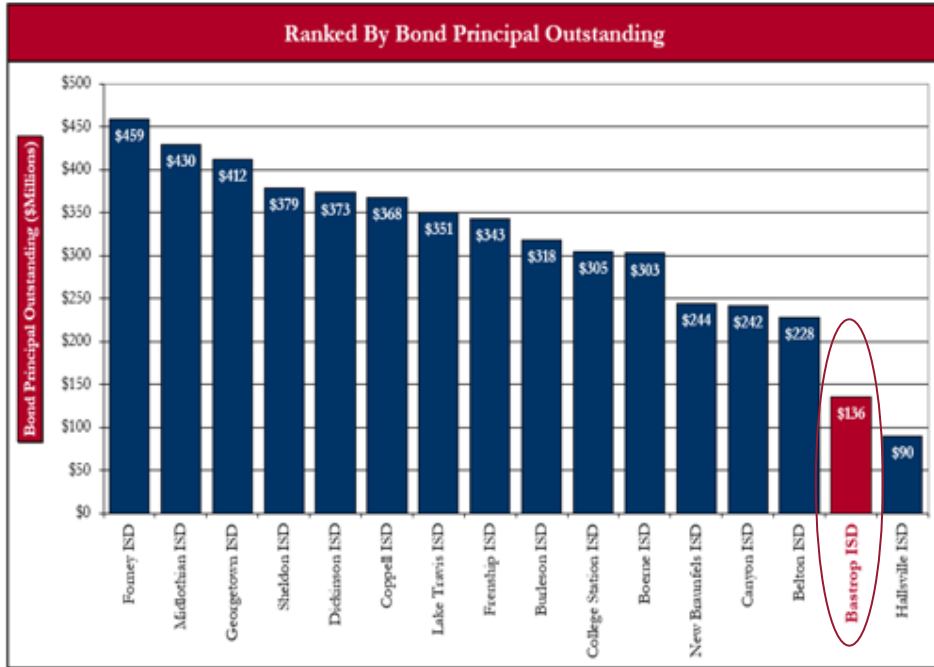
## REGION 13 PEERS

Ranked By Total Tax Rate – Year 2020/21

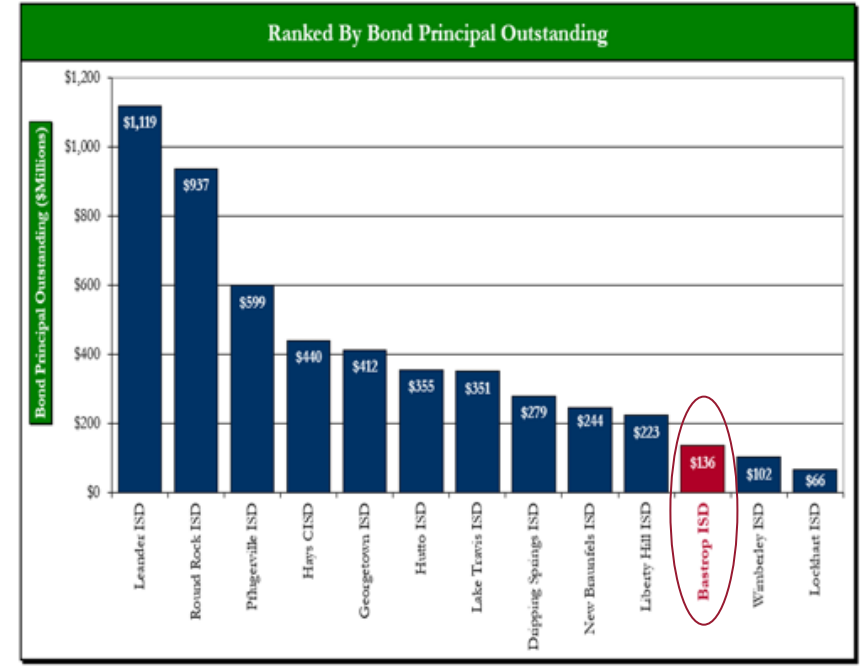


# WHERE BISD RANKS: Outstanding Bond Principal

## FAST GROWTH PEERS



## REGION 13 PEERS



**2021**   
**BOND**  
**ELECTION**   
**BASTROP ISD**

## Why now?

- Building history
- Enrollment growth and campus capacity
- History of bond elections
- Comparison to our peers

# HOW OLD ARE OUR SCHOOLS?

---



**Emile 1953**

**Mina 1953**



**CRCA/GHS 1968**



**BHS 1985**



**BIS 1994**



**CCE 1994**



**BMS 1999**



**RRE 2000**



**CCMS 2000**



**BES 2004**



**LPE 2004**



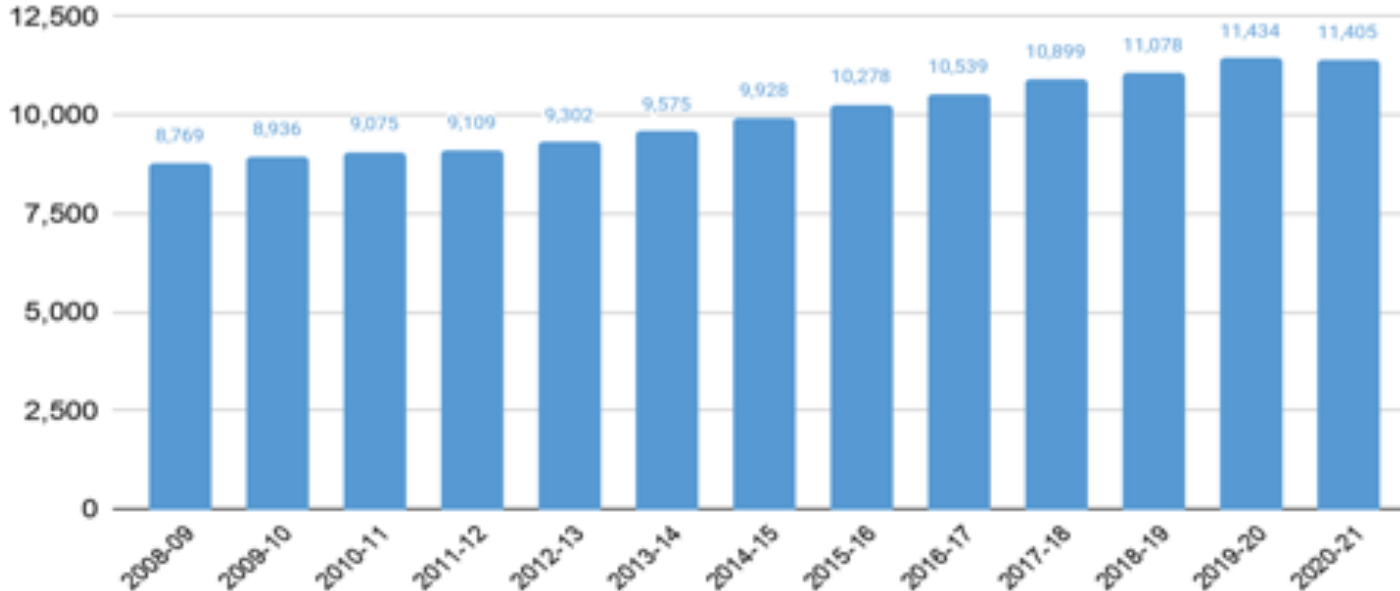
**CCIS 2004**



**CCHS 2009**

# ENROLLMENT HISTORY & GROWTH

- ★ Enrollment has increased 28% in the last 10 years.
- ★ ~~2,250~~<sup>3,100</sup> more students are expected within 5 years and ~~4,425~~<sup>7,300</sup> within 10 years



**\*63%  
GROWTH IS  
POSSIBLE IN  
THE NEXT 10  
YEARS**

# 10 YEAR FORECAST WITHOUT PORTABLES

Campus	Functional Capacity w/o Portables	Fall	ENROLLMENT PROJECTIONS									
		2020/21	2021/22	2022/23	2023/24	2024/25	2025/26	2026/27	2027/28	2028/29	2029/30	2030/31
Bluebonnet Elementary	750	716	807	873	820	836	892	1,030	1,063	1,024	1,147	1,183
Cedar Creek Elementary	833	830	884	998	1,120	1,194	1,151	1,239	1,269	1,246	1,217	1,212
Enlie Elementary	750	740	804	867	815	831	831	817	841	864	874	879
Lost Pines Elementary	750	642	701	736	733	733	739	740	733	742	751	753
Mina Elementary	750	652	698	751	810	820	1,002	1,107	1,195	1,259	1,314	1,386
Red Rock Elementary	750	621	658	641	662	680	676	670	667	671	670	666
<b>ELEMENTARY SCHOOL TOTALS</b>	<b>4,383</b>	<b>4,200</b>	<b>4,532</b>	<b>4,866</b>	<b>5,192</b>	<b>5,398</b>	<b>5,394</b>	<b>5,743</b>	<b>5,874</b>	<b>5,866</b>	<b>6,093</b>	<b>6,191</b>
Elementary Absolute Growth		-173	332	334	326	206	186	149	131	112	107	88
Elementary Percent Growth		-3.94%	7.90%	7.37%	6.70%	3.97%	3.43%	2.60%	2.28%	1.93%	1.79%	1.43%
Eastrop Intermediate	850	801	872	796	798	834	1,044	1,085	1,138	1,125	1,150	1,200
Cedar Creek Intermediate	850	814	837	915	846	1,051	1,103	1,090	1,134	1,037	1,179	1,187
<b>INTERMEDIATE SCHOOL TOTALS</b>	<b>1,700</b>	<b>1,715</b>	<b>1,709</b>	<b>1,748</b>	<b>1,744</b>	<b>1,885</b>	<b>2,159</b>	<b>2,175</b>	<b>2,243</b>	<b>2,282</b>	<b>2,329</b>	<b>2,388</b>
Intermediate Absolute Growth		-60	44	-10	-5	241	173	37	67	39	41	65
Intermediate Percent Growth		-3.53%	2.55%	-0.59%	-0.28%	13.84%	8.73%	0.78%	3.09%	1.79%	1.79%	2.80%
Eastrop Middle School	750	836	889	886	887	861	868	1,013	1,130	1,166	1,196	1,212
Cedar Creek Middle School	750	877	940	915	964	1,001	1,004	1,115	1,159	1,041	1,200	1,219
<b>MIDDLE SCHOOL TOTALS</b>	<b>1,500</b>	<b>1,813</b>	<b>1,899</b>	<b>1,899</b>	<b>1,892</b>	<b>1,866</b>	<b>1,872</b>	<b>2,127</b>	<b>2,288</b>	<b>2,308</b>	<b>2,396</b>	<b>2,431</b>
Middle School Absolute Growth		-68	16	0	32	-15	6	265	152	20	88	35
Middle School Percent Growth		-4.53%	0.89%	0.01%	1.74%	-0.81%	0.31%	14.14%	7.09%	0.88%	3.80%	1.48%
Eastrop High School	1,600	1,512	1,571	1,637	1,689	1,696	1,721	1,688	1,701	1,839	1,919	2,156
Cedar Creek High School	1,500	1,739	1,831	1,864	1,892	1,894	1,913	1,919	1,968	2,034	2,142	2,253
Genasis High School	175	117	117	117	117	117	117	117	117	117	117	117
Colorado River Collegiate Acad	375	233	233	233	233	233	233	233	233	233	233	233
<b>HIGH SCHOOL TOTALS</b>	<b>3,924</b>	<b>3,599</b>	<b>3,756</b>	<b>3,851</b>	<b>3,911</b>	<b>3,940</b>	<b>3,924</b>	<b>3,957</b>	<b>4,059</b>	<b>4,291</b>	<b>4,601</b>	<b>4,739</b>
High School Absolute Growth		-325	157	95	70	19	34	-17	62	274	168	298
High School Percent Growth		-8.28%	4.30%	2.51%	1.82%	0.48%	0.86%	-0.43%	1.57%	6.82%	3.95%	6.68%
<b>DISTRICT TOTALS</b>	<b>11,737</b>	<b>11,147</b>	<b>11,895</b>	<b>12,514</b>	<b>12,738</b>	<b>13,189</b>	<b>13,598</b>	<b>14,012</b>	<b>14,424</b>	<b>14,869</b>	<b>15,721</b>	<b>15,769</b>
District Absolute Growth		-590	648	726	544	411	409	414	412	445	403	497
District Percent Growth		-5.03%	5.51%	5.79%	4.27%	3.12%	3.01%	3.02%	2.9%	2.9%	2.7%	3.1%



Year	Amount	Project	Result
2002	\$39 mil	3 new schools, renovations to other campuses, buses	Passed
2003	\$77 mil	(May) - CCHS; Memorial Stadium; renovations to BHS and Erhard	Failed
2003	\$64 mil	(Sep) - CCHS, PAC, BHS renovation	Failed
2005	\$23 mil	BHS renovation	Passed
2007	\$97 mil	CCHS, Performing Arts Center, and Memorial Stadium	Passed
2016	\$75 mil	Combined with TRE; additions and renovations at multiple campuses	Failed
2017	\$85 mil	Additions and renovations at multiple campuses	Failed
2020	\$140 mil	1 new elementary school, major renovations to BHS and Mina, plus improvements to all other schools	Cancelled (COVID)





- Over the last 10 years, Texas school districts within ESC Region 13 have held 34 successful bond elections of \$50 million or more, totaling \$6,827,267,500.

## Texas School Districts Within Region 13 Education Service Center 34 Successful Bond Elections of \$50 Million or More Since Year 2009 Totaling \$6,827,267,500

No.	School District	Election Date	Bonds Approved	No.	School District	Election Date	Bonds Approved
1	Austin ISD	November 7, 2017	\$ 1,050,984,000	18	Dripping Springs ISD	May 5, 2018	\$ 132,000,000
2	Round Rock ISD	November 6, 2018	508,435,000	19	Manor ISD	May 10, 2014	124,900,000
3	Austin ISD	May 11, 2013	489,731,000	20	New Braunfels ISD	November 6, 2018	118,341,000
4	Leander ISD	November 7, 2017	454,405,000	21	San Marcos CISD	May 6, 2017	107,300,000
5	Pflugerville ISD	November 6, 2018	332,000,000	22	Liberty Hill ISD	November 6, 2018	98,600,000
6	Round Rock ISD	May 10, 2014	299,000,000	23	Dripping Springs ISD	May 10, 2014	92,410,000
7	Pflugerville ISD	May 10, 2014	287,000,000	24	Manor ISD	May 7, 2016	86,000,000
8	Del Valle ISD	November 5, 2019	284,000,000	25	Liberty Hill ISD	November 2, 2010	85,580,000
9	Manor ISD	November 5, 2019	280,000,000	26	Eanes ISD	May 4, 2019	80,000,000
10	Lake Travis ISD	November 7, 2017	253,000,000	27	San Marcos C ISD	May 11, 2013	76,980,000
11	Hays CISD	May 6, 2017	250,000,000	28	Lockhart ISD	May 10, 2014	63,915,000
12	Hutto ISD	May 4, 2019	194,400,000	29	New Braunfels ISD	November 3, 2015	62,800,000
13	Georgetown ISD	November 3, 2015	160,600,000	30	Hays CISD	May 10, 2014	59,091,500
14	Lake Travis ISD	November 8, 2011	158,455,000	31	Marble Falls ISD	November 6, 2018	55,000,000
15	Georgetown ISD	November 6, 2018	150,500,000	32	Eanes ISD	May 14, 2011	54,000,000
16	Georgetown ISD	November 2, 2010	137,300,000	33	Jarrell ISD	May 6, 2017	54,000,000
17	Del Valle ISD	November 4, 2014	134,040,000	34	Eanes ISD	May 9, 2015	52,500,000

# 2021 BOND ELECTION

BASTROP INDEPENDENT SCHOOL DISTRICT

**GROWTH:  
New  
Schools**



**GROWTH:  
Renovation/  
Expansion**



**General  
Improvements**



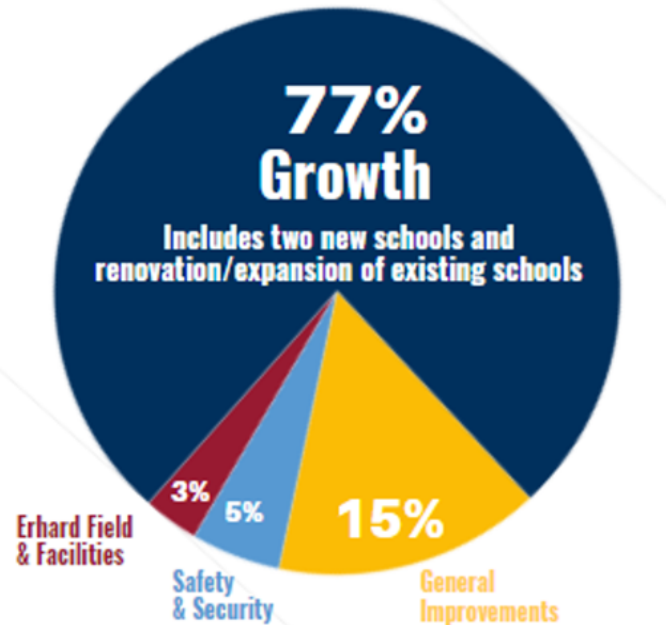
**Safety &  
Security**



**Erhard Field  
& Facilities**



# Breakdown of Projects: \$183,650,000



- ★ 77% of the bond addresses **GROWTH** by building two new elementary schools and by renovating and/or expanding existing schools
- ★ 15% of the bond is for **GENERAL IMPROVEMENTS** throughout the district
- ★ 5% is for **SAFETY** and security upgrades
- ★ 3% is for improvements to **ERHARD** Field and related facilities

# GROWTH: New Schools

---

**\$64,380,440**

- ★ **TWO NEW** elementary schools
- ★ One in Bastrop off of FM 969 on 12 acre site
- ★ One in Cedar Creek near FM 812 and Highway 21 on district-owned land

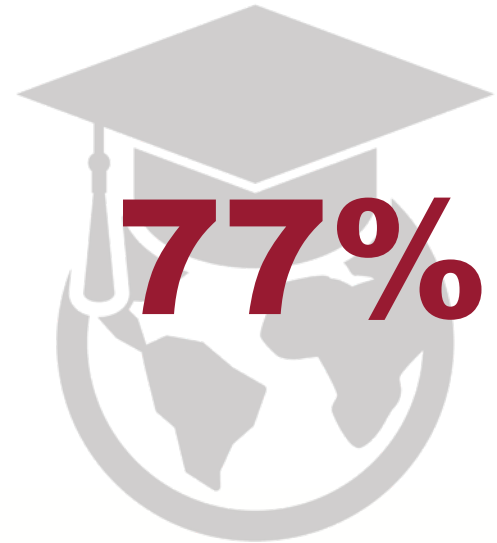


# GROWTH: Renovation/Expansion of Existing Schools

---

**\$76,065,235**

- ★ Consolidation of Mina Elementary to one side of Hill Street, including additional classrooms, redesigned front entry, dining area, and new playground
- ★ Transformation of intermediate schools to middle schools for grades 6-8
- ★ Expansion and renovation of science labs and weight rooms at middle schools

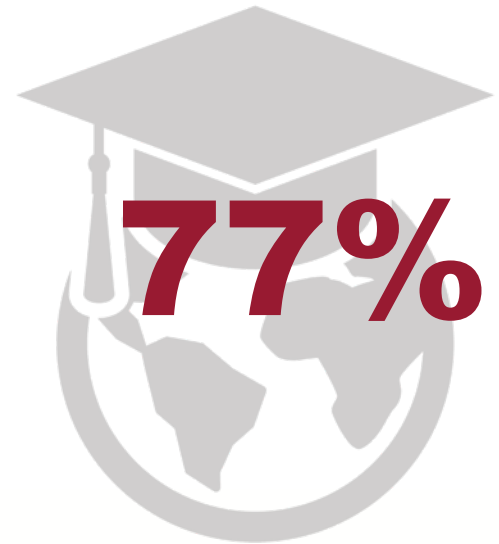


# GROWTH: Renovation/Expansion of Existing Schools

---

**\$76,065,235**

- ★ New academic wing at BHS including comprehensive master plan
- ★ Renovation of choir and dance classrooms at BHS and expansion of Career & Technical Education facilities
- ★ Additional classrooms at CCHS to increase capacity to 2,100 students
- ★ Technology infrastructure

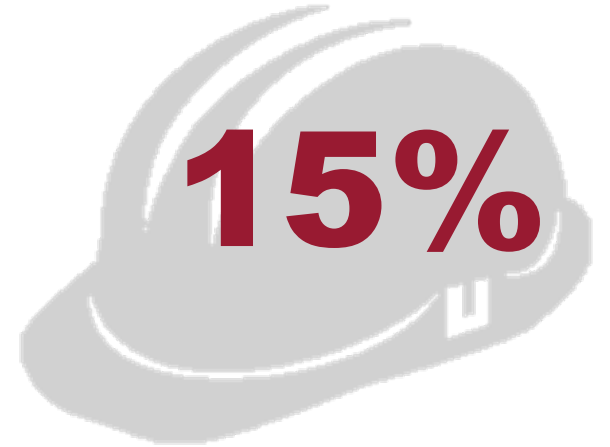


# GENERAL IMPROVEMENTS

---

**\$27,972,741**

- ★ Infrastructure and building system renovations at all schools
- ★ Addition or renovation of concessions, restrooms and dressing rooms for BHS softball & baseball
- ★ Expansion or improvements of parking lots and driveways at elementary schools



# SAFETY & SECURITY

---

**\$9,410,584**

- ★ Redesigned school front entries
- ★ Security fencing and access doors for middle school courtyards
- ★ Security curtains on interior windows of identified classrooms at CCHS



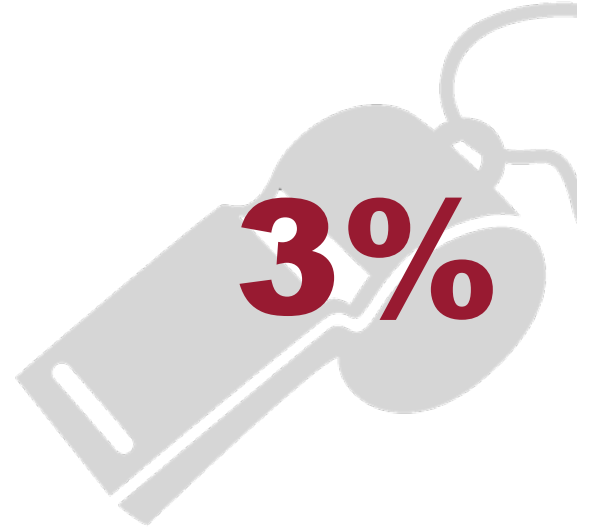


# ERHARD FIELD & FACILITIES

---

**\$5,821,000**

- ★ Renovation of sports center and locker rooms at BHS
- ★ Artificial surface for Erhard Field



# CAMPUS SPECIFIC PROJECTS

---

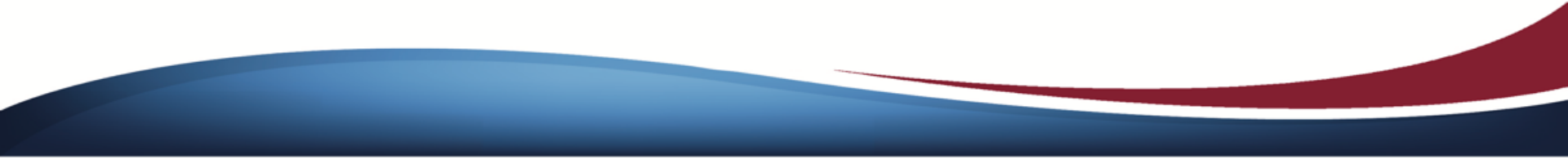
## Bastrop High School

- ★ Redesigned front entry for enhanced security
- ★ New academic wing of classrooms
- ★ Expansion and renovation of Career & Technical Education facilities
- ★ Addition of dance facility and renovation for choir hall
- ★ Renovation of restrooms in main building
- ★ Upgrade of interior building lighting
- ★ Interior refurbishments including paint, new doors, new ceilings and flooring in classrooms and hallways
- ★ Dressing facilities, restrooms and concession renovation for baseball
- ★ Dressing facilities, restrooms and concession renovation for softball
- ★ Roof repair and replacement
- ★ Mechanical/HVAC upgrades, including controls
- ★ Artificial surface for Erhard Field
- ★ Expansion of weight room
- ★ Renovation of sports center including locker rooms, restrooms, showers, flooring/ceiling, and paint

# CAMPUS SPECIFIC PROJECTS

---

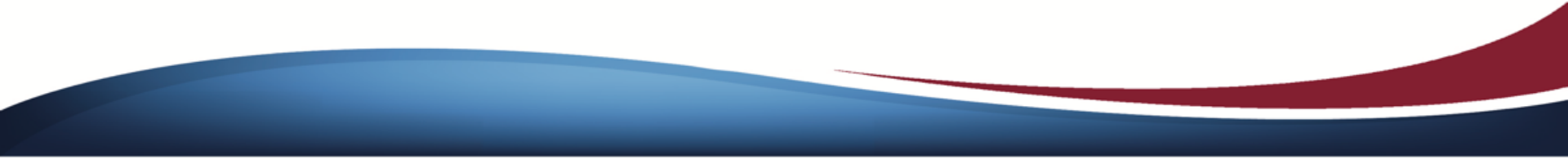
## Cedar Creek High School

- ★ Addition of classrooms to increase capacity to 2,100
  - ★ Special security curtains for classrooms with glass walls
  - ★ Additional security cameras/devices
  - ★ Display space in common areas
  - ★ Ventilation to sound rooms for band
  - ★ Repair of bleachers in main gym
  - ★ Mechanical/HVAC upgrades, including controls
  - ★ Drainage and fencing improvements
  - ★ General campus refurbishments
  - ★ New flooring in field house
- 

# CAMPUS SPECIFIC PROJECTS

---

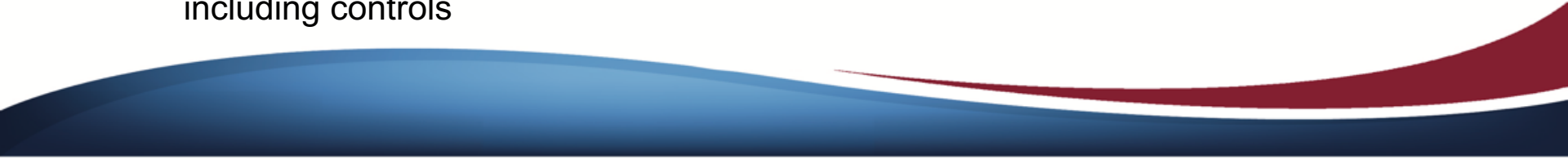
## Colorado River Collegiate Academy & Genesis High School

- ★ Redesigned front entry for enhanced security, including new vestibule
  - ★ Roof replacement of flat roof areas
  - ★ Mechanical/HVAC upgrades, including controls
  - ★ General campus refurbishments including new ceilings
  - ★ Exterior asphalt repair
- 

# CAMPUS SPECIFIC PROJECTS

---

## Bastrop & Cedar Creek Middle Schools

- ★ Redesigned front entry for enhanced security
  - ★ Security upgrades to exterior courtyard and additional security cameras/devices
  - ★ Enlargement of science lab
  - ★ Expansion of weight room
  - ★ New canopy at bus loop
  - ★ New canopy at gymnasium
  - ★ Mechanical/HVAC upgrades, including controls
  - ★ Interior refurbishments including paint, flooring in corridors, gym lighting
  - ★ Drainage improvements
  - ★ Roofing improvements
  - ★ Regrading and sodding of athletic field
  - ★ New asphalt running track
  - ★ Resurface & repair of tennis courts
- 

# CAMPUS SPECIFIC PROJECTS

---

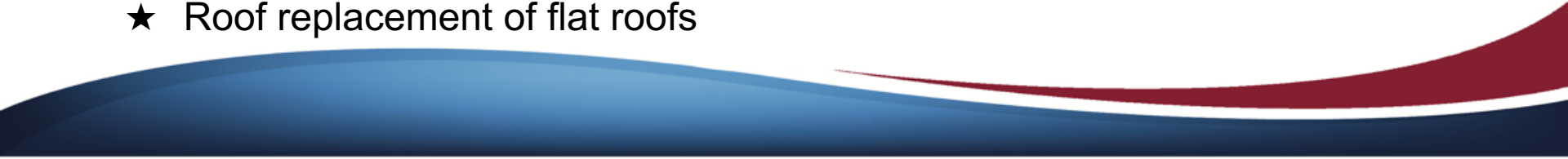
## Bastrop & Cedar Creek Intermediate (future middle schools)

- ★ Transformation into comprehensive middle school for grades 6-8, including:
  - Competition gym, weight room, locker rooms, restrooms and concession
  - Athletic field and track
  - Music, drama and art spaces
  - Science labs
- ★ Redesigned front entry for enhanced security
- ★ Additional security cameras/devices
- ★ Interior refurbishments including paint, flooring in corridors, and ceilings
- ★ Extension of parent drop-off/pick-up to accommodate additional stacking
- ★ Mechanical/HVAC upgrades, including controls
- ★ Plumbing system improvements (CCIS only)

# CAMPUS SPECIFIC PROJECTS

---

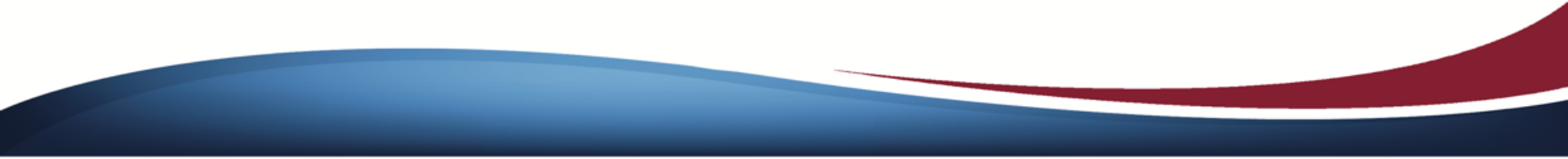
## Emile Elementary

- ★ Redesigned front entry for enhanced security
  - ★ Additional security cameras/devices
  - ★ Replacement of PA/intercom system
  - ★ Mechanical/HVAC upgrades, including controls
  - ★ Interior refurbishments including paint, ceiling and flooring in key areas
  - ★ Expansion or improvements to conditions at parent drop off and bus queuing lanes
  - ★ New site signage
  - ★ Drainage and fencing improvements
  - ★ Roof replacement of flat roofs
- 

# CAMPUS SPECIFIC PROJECTS

---

## Lost Pines Elementary

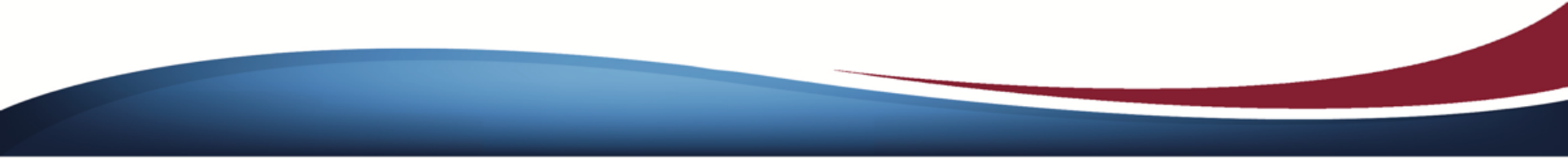
- ★ Redesigned front entry for enhanced security
  - ★ Additional security cameras/devices
  - ★ Replacement of PA/intercom system
  - ★ Mechanical/HVAC upgrades, including controls
  - ★ Interior refurbishments including paint, ceiling and flooring in key areas
  - ★ Expansion or improvements to conditions at parent drop off and bus queuing lanes, including sidewalks
  - ★ Addition/upgrade of fabric canopies at playgrounds
- 



# CAMPUS SPECIFIC PROJECTS

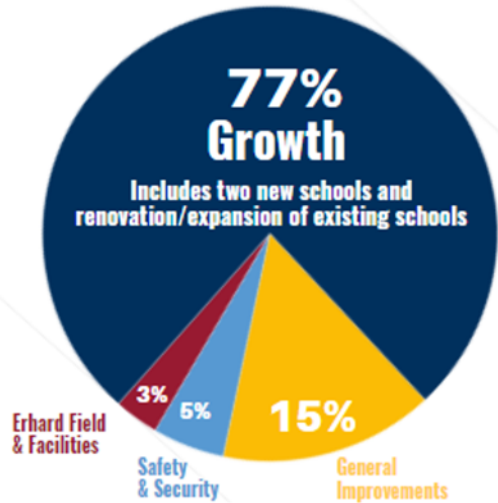
---

## **Mina Elementary**

- ★ Renovation/new construction to locate campus on east side of Hill St
  - ★ New parking and student drop-off
  - ★ Addition of new classrooms and front entry/office area
  - ★ Renovation of existing office into additional classrooms
  - ★ New student dining area
  - ★ New playground
  - ★ Additional security cameras/devices
  - ★ General campus refurbishments
- 

# 2021 BOND ELECTION

BASTROP INDEPENDENT SCHOOL DISTRICT



**TWO PROPOSITIONS**

**Prop A \$177.8M**

**Prop B \$5.8M**

**Zero Tax Rate Impact**

**Taxes Frozen Age 65+**



# **BASTROP INDEPENDENT SCHOOL DISTRICT**

## **[BISDTX.ORG/BOND2021](https://www.bisdtx.org/bond2021)**

**LAST DAY TO REGISTER**

**April 1**

**EARLY VOTING**

**April 19-27**

**ELECTION DAY**

**May 1**